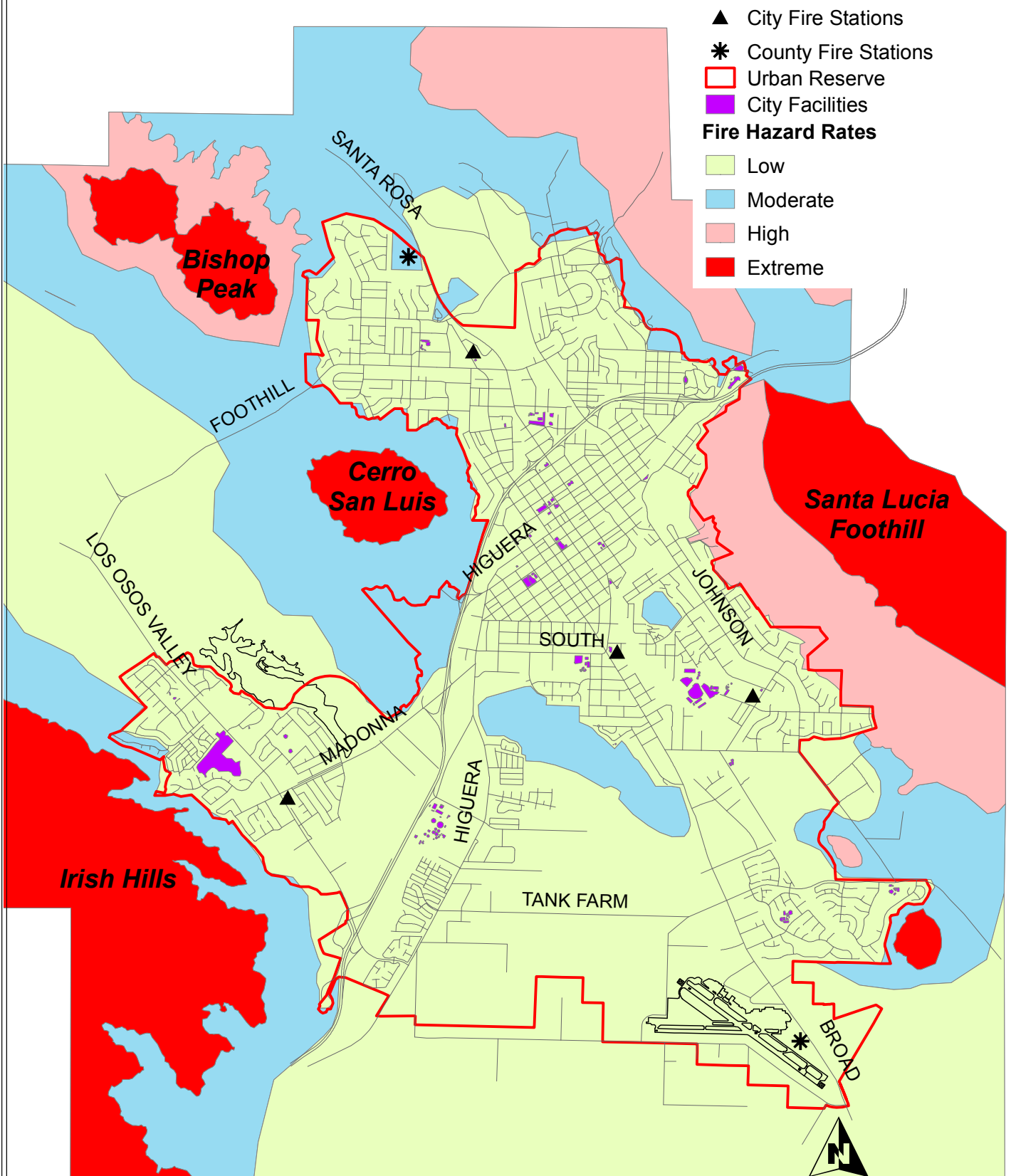


city of san luis obispo safety element  
**Wildland Fire Hazard**

Hazard classifications based on  
 general slope and vegetation type



- ▲ City Fire Stations
  - \* County Fire Stations
  - Urban Reserve
  - City Facilities
- Fire Hazard Rates**
- Low
  - Moderate
  - High
  - Extreme

This map is for general information. The map by itself is not a statement of policy. This map may be revised in response to new information, without amending the Safety Element.  
 20041013

0 0.5 1 2 Kilometers