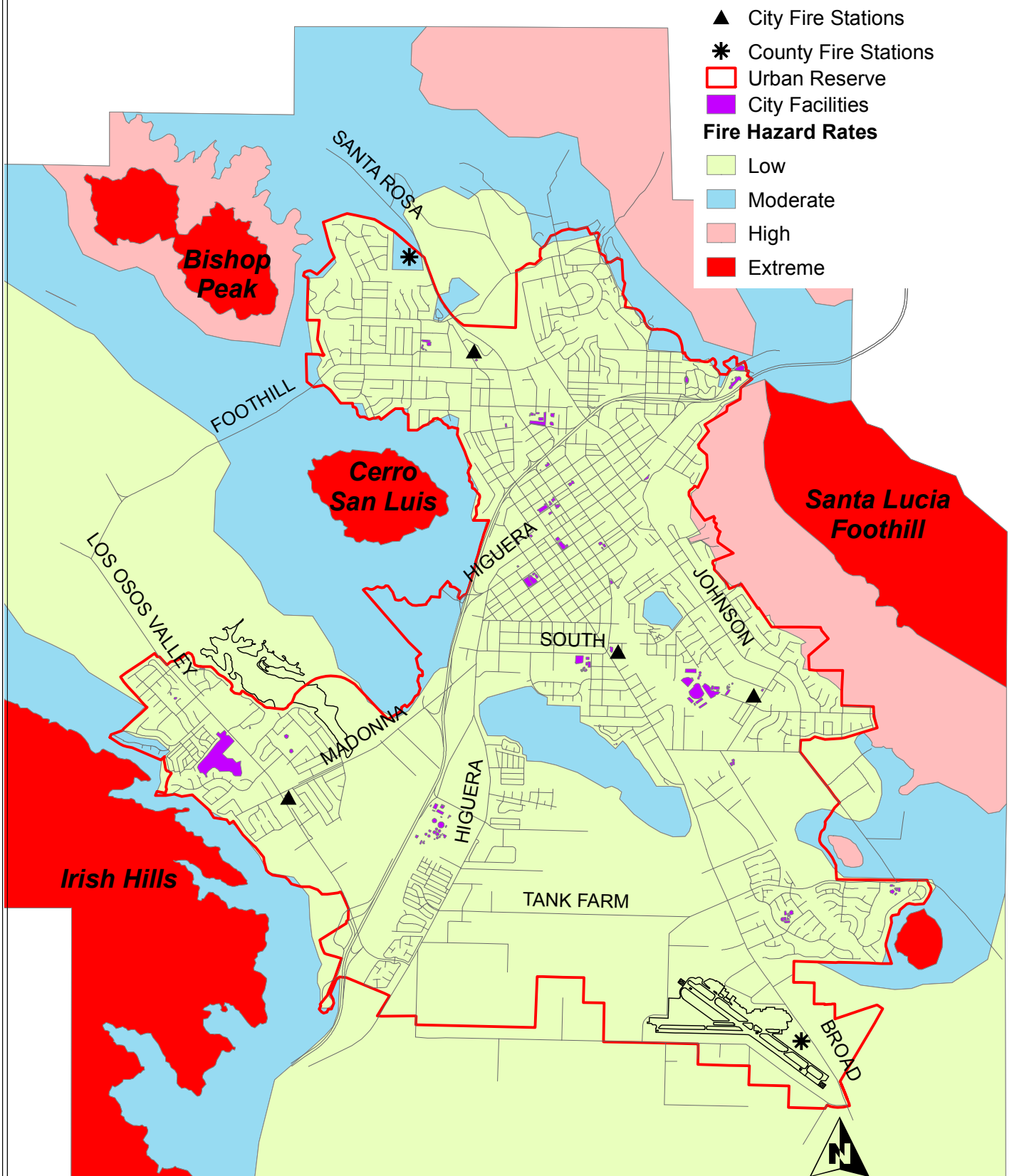


city of san luis obispo safety element
Wildland Fire Hazard

Hazard classifications based on
 general slope and vegetation type



- ▲ City Fire Stations
 - * County Fire Stations
 - Urban Reserve
 - City Facilities
- Fire Hazard Rates**
- Low
 - Moderate
 - High
 - Extreme

This map is for general information. The map by itself is not a statement of policy. This map may be revised in response to new information, without amending the Safety Element.
 20041013

0 0.5 1 2 Kilometers